

### DWX-4W Highlights:

- Capable of milling glass ceramics and composite resin
- Combines 4-axis milling with simple one-button operation
- High-performance Jaeger DentaDrive spindle
- Multi pin-clamp to mill up to three different pin-type materials continuously
- 4-station Automatic Tool Changer to change grinding burs for continuous production
- Color-coded LED status lights signal machine errors and milling completion
- Easy VPanel operation to configure settings and track milling progress
- Connect up to four DWX devices to one computer
- Fully integrated pump and coolant system
- Automatic machine calibration
- Pair the DWX-51D and DWX-4W for the most flexible and productive dry and wet solution
- Made in Japan



SPECIFICATIONS		
Cuttable material		Glass ceramics, Composite resin
Loadable workpiece shape	Width	Maximum 40 mm (1.57 in)
	Depth	Maximum 20 mm (0.79 in)
	Height	Maximum 20 mm (0.79 in)
Operating speed		6 to 1,800 mm/min. (0.24 to 70.9 in./min.)
Spindle		Jaeger high frequency spindle with taper cleaning function
Spindle speed		15,000 to 60,000 rpm
Rotary axis travel angle	A axis	± 360°
Number of burs housed		4
Attachable bur	Shank diameter	3 mm (Dedicated milling bur for wet grinding)
Compatible compressed air*		0.6 to 0.8 MPa
Interface		USB
Control command set		RML-1, NC code
Power requirements		AC 100 to 240 V +10 %, 50/60 Hz , 1.9 A (overvoltage category II, IEC 60664-1)
Power consumption		Approx. 200 W
Operating noise	During operation	70 dB (A) or less (when not cutting)
	During standby	48 dB (A) or less
External dimensions	Width x Depth x Height	480 x 538 x 599 mm (18.9 x 21.2 x 23.6 in.)
Weight		53 kg (116.8 lbs.)
Installation environment	Indoor use, Altitude	Up to 2,000 m (6,562 ft.)
	Temperature	5 to 28°C (41 to 82.4°F)
	Relative humidity	35 to 80 % (no condensation)
	Ambient pollution degree	2 (as specified by IEC 60664-1)
	Short-term temporary overvoltage	1,440 V
Long-term temporary overvoltage		490 V
Included items		Power cord, USB cable, Drain hoses, Detection pin, Dedicated milling burs, Automatic correction jig, Measuring cup, Hexagonal screwdriver, Hexagonal wrench, Mounting screws, Setup guide, Daily maintenance card, Roland Software Package CD, Spindle maintenance kit
System requirements for USB connection	Operating system	Windows® 7/8/8.1/10 (32 or 64 bit)
	USB cable	Use the included USB cable
<b>OPTIONS</b>		
Collet (model #ZC-3JD)		Replacement spindle collet
Additive (model #ZAW-1000D)		Additive for coolant 1000 ml
Filter for coolant tank (model #ZF-CLD)		Replacement filter for coolant tank
Grinding bur (model #ZGB-125D)		R1.25mm milling bur for wet grinding
Grinding bur (model #ZGB-50D)		RO.50mm milling bur for wet grinding
Grinding bur (model #ZGB-25D)		RO.25mm milling bur for wet grinding

\* Please contact your Roland DG dealer for the appropriate air compressor.



The Roland Easy Shape logo symbolizes the Company's philosophy in the dental industry. High-level products, first quality materials, and sophisticated, cutting-edge technologies combine to create the finest dental milling devices and precision results for your lab.

Roland DG reserves the right to make changes in specifications, materials or accessories without notice. Actual device output may vary. For optimum output quality, periodic maintenance to critical components may be required. Please contact your Roland DG dealer for details. No guarantee or warranty is implied other than expressly stated. Roland DG shall not be liable for any incidental or consequential damages, whether foreseeable or not, caused by defects in such products.

Three-dimensional shapes may be protected under copyright. Reproduction or use of copyrighted material is governed by local, national, and international laws. Customers are responsible for observing all applicable laws and are liable for any infringement. All trademarks are the property of their respective owners.

Roland DG Corporation has licensed the MMP technology from the TPL Group.

## The all-new **DWX-4W** Wet Dental Mill



Complete your dental restoration solution  
with the DWX-4W Wet Dental Mill.







## DWX-4W Wet Dental Mill

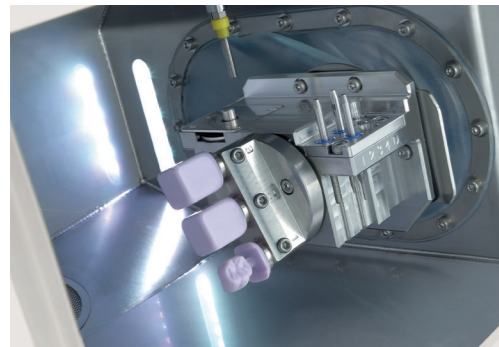
The DWX-4W represents the latest in DWX technology, going beyond dry milling to quickly and easily wet mill popular glass ceramics and composite resin with the precision and reliability Roland DG products are known for.

Compact and easy-to-use, it provides unattended wet milling of crowns, bridges, inlays, onlays and veneers.



### High-Performance Jaeger DentaDrive Spindle

The DWX-4W's high-performance 60,000 RPM Jaeger DentaDrive spindle supports precision milling. It's equipped to mill pin-type blocks, including glass ceramics and composite resin - acclaimed in the industry for their superior strength and aesthetics. Materials can be finished with a short finishing time, dramatically reducing labor and production time.

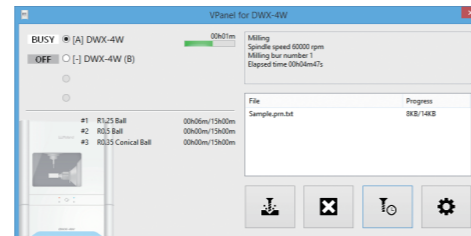


### Multi-Axes Milling

In addition to milling on X, Y and Z axes, the DWX-4W rotates pin-type blocks 360 degrees on a fourth axis (A axis) to support undercuts. The rigid ball screw-driven 4-axis control allows for smooth, high-precision machining. With its multi-pin clamp, it can mill up to three different pin-type materials continuously, enabling production of three different patient prosthetics in a single production run. It also features an Automatic Tool Changer (ATC) that auto-changes grinding burs without interrupting the production process.

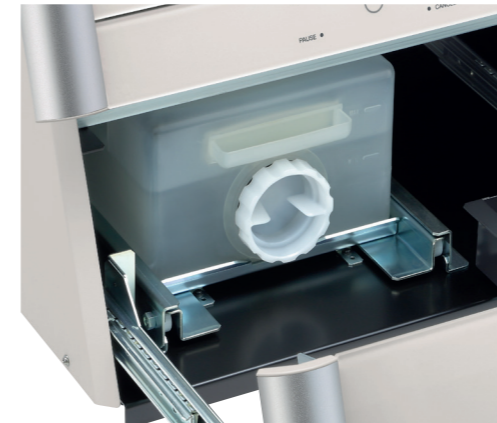
### VPanel for Simplified Operation

Complex controls associated with CNC milling have been replaced by a user-friendly Virtual Machine Panel (VPanel) that automatically starts the milling process, conducts machine diagnostics and operates milling calibration from your computer.



### Economical Open Architecture

Open architecture allows the DWX-4W to work with the latest materials and CAD/CAM software so you're never limited by older technology. If you already have a production solution, it works seamlessly with your existing scanner and compatible CAD/CAM software while eliminating the need to rely on a single source for materials.



WATER COLLECTION FILTRATION SYSTEM

### User-Friendly Operation

Even novice users can quickly set up the DWX-4W and begin creating prosthetics the same day the machine arrives. Ease of use features include:

- Simple one-button design.
- Color-coded LED status lights signal current job progress.
- Fully integrated pump and coolant system, with water collection filtration for maintaining a clean and efficient workspace.
- The Virtual Machine Panel (VPanel) allows users to configure settings from their computer, send CAM data to the DWX-4W for production, and track milling progress.



DWX-4W

DWX-51D

### Combine DWX Devices for a Complete Dental Solution

Pair the DWX-51D and DWX-4W for the most flexible and productive dry and wet milling solution. Using both dry and wet DWX devices gives you the technology and confidence to take on the maximum amount of glass ceramics and zirconia restorations. In contrast to dry and wet combo devices, a dedicated DWX dry and wet solution eliminates the switch back-and-forth through processes and the hours of cleaning in-between jobs.



Connect up to four DWX devices to one computer.

### Peace-of-Mind, Reliability and Support

Roland DG milling machines combine unbeatable performance with legendary Roland DG reliability. As further proof of our unmatched reliability, Roland DG offers the best warranty and post sales support in the industry, including educational webinars and videos, online and telephone support, and certified service engineers to keep your DWX-4W running smoothly.

